



Seed Mussel Growth Report for the Lambay Sound, Rush and Howth

Vessel: MV T'Burke (BIM), Skipper John Murphy, Survey Officer Nicolas Chopin

Equipment: 400 kHz side scan sonar, 1 m dredge.

Area surveyed: Northeast of Malahide up to the Cable Rock, around Rush Point for the Lambay sound. Between Howth and Ireland's Eye, the Nose of Howth and between the Baily Lighthouse and Drumleck Point.

Survey summary:

→**Lambay Sound (map 1):** The side scan sonar was deployed from the northeast of Malahide and Cable Rock. Few features were marked and investigated with the dredge but no seed or spat was found, only stones, few starfish and crabs were observed.

The side scan sonar was then deployed around Rush Point. The ground appeared very soft north of the point (sand ripples) and rough and hard south (rock reef abreast of the Point and boulders further south). No features were logged.

→**Howth (map 2):** Following signs of small seed in the deeper water around the Nose of Howth late last year, few tows were made in the location but no trace of seed or spat were found.

The side scan sonar was deployed south of Howth and few features were logged and investigated. No seed or spat was found in the location, the features observed with the side scan sonar turned out to be stones.

Nicolas Chopin
Inshore Survey Officer
BIM Aquaculture Technical Section

Notes for the maps:

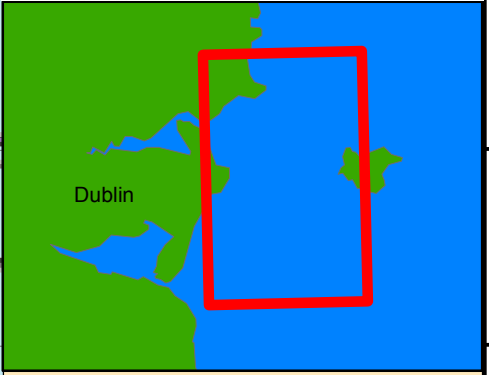
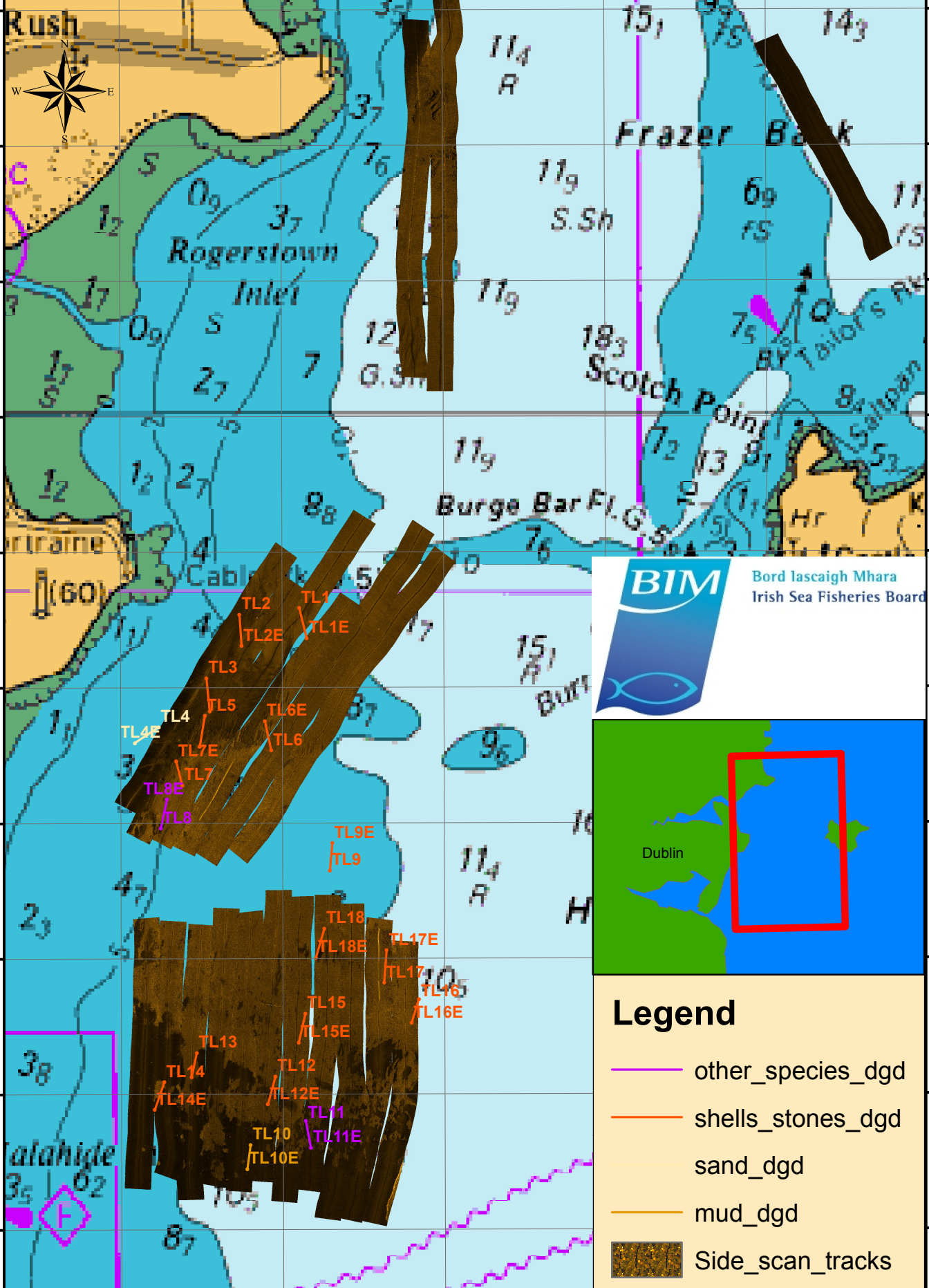
TL stands for Tow Lambay

TH stands for Tow Howth

Dgd stands for dredge in the legend

Seed Survey Map for the Lambay Sound and Rush - 5/08/13 to 7/08/13

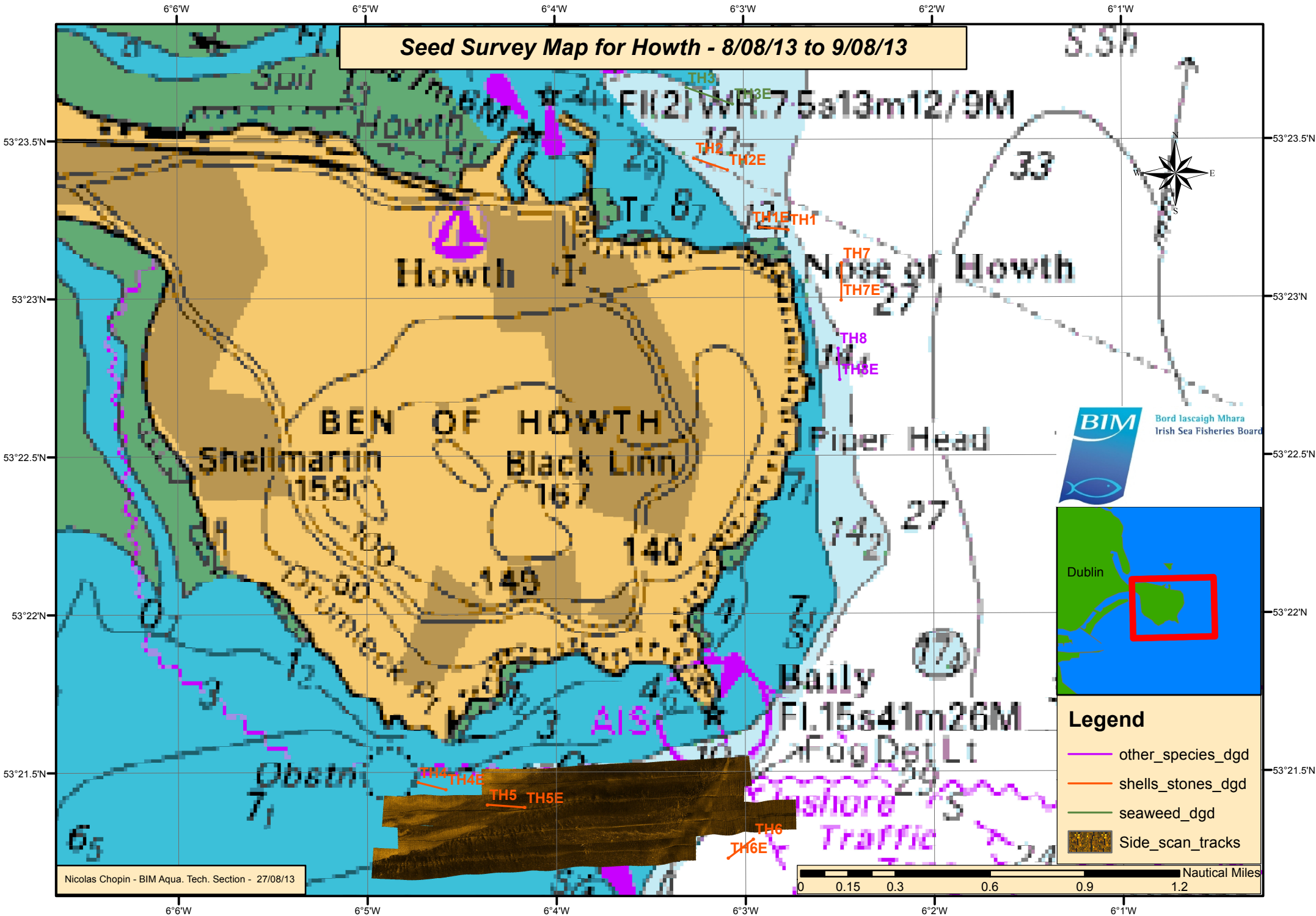
POSITIONS



Legend

- other_species_dgd
- shells_stones_dgd
- sand_dgd
- mud_dgd
- Side_scan_tracks

Seed Survey Map for Howth - 8/08/13 to 9/08/13



Legend

- other_species_dgd
- shells_stones_dgd
- seaweed_dgd
- Side_scan_tracks



Nicolas Chopin - BIM Aqua. Tech. Section - 27/08/13