



Bord Iascaigh Mhara
Irish Sea Fisheries Board

Preliminary Seed Mussel Survey Report for Cahore Point and the Rusk Channel – 15/05/14 to 26/05/14

Vessel: MV T'Burke (BIM), Skipper John Murphy, Survey Officer Nicolas Chopin

Equipment: 400 kHz side scan sonar, 1 meter dredge.

Area surveyed: From the Rusk Buoys N. 1 and 2 to the North Blackwater cardinal buoy; between the Rusk Bank and the shore and around Cahore point.

Survey summary:

As for previous years, the areas around Cahore point and the Rusk Channel were checked for seed. The side scan sonar for deployed in the Rusk Channel despite numbers of whelk pots, no major settlement was found but few interesting features were assessed.

Some spat were found in two tows east of the Rusk N. 4 buoy. As for the spat found in Wexford, it is very small (1 to 3 mm) and set on gravel/small stones. No density could be established again due to the size of the spat. The distance between the tows covers a bit more than 500 metres.

Coordinates for the general spat fall area (in Degrees, decimal minutes WGS84):

Latitude	Longitude
52° 31.228' N	6° 10.503' W
52° 30.879' N	6° 10.705' W
52° 30.919' N	6° 10.796' W
52° 31.242' N	6° 10.647' W

Only few tows were mad on the shore side and around Cahore Point, but no large spat fall area was found. Few small spat were observed in one tow on the west side of the Rusk Bank (TC24 on the Preliminary survey map).

Bottom type: gravel/ coarse sand and small stones. Average depth: 16 metres.

Recommendations:

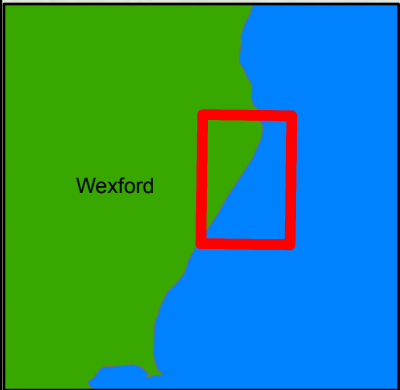
As for the settlement found on the Long Bank, it is too soon to give an opinion for this area. More survey will be carried out close to the shore later in the season. The actual settlement will be checked for growth in few weeks' time.

Nicolas Chopin
BIM Inshore Survey Officer
Aquaculture Technical Section

Notes for the map:

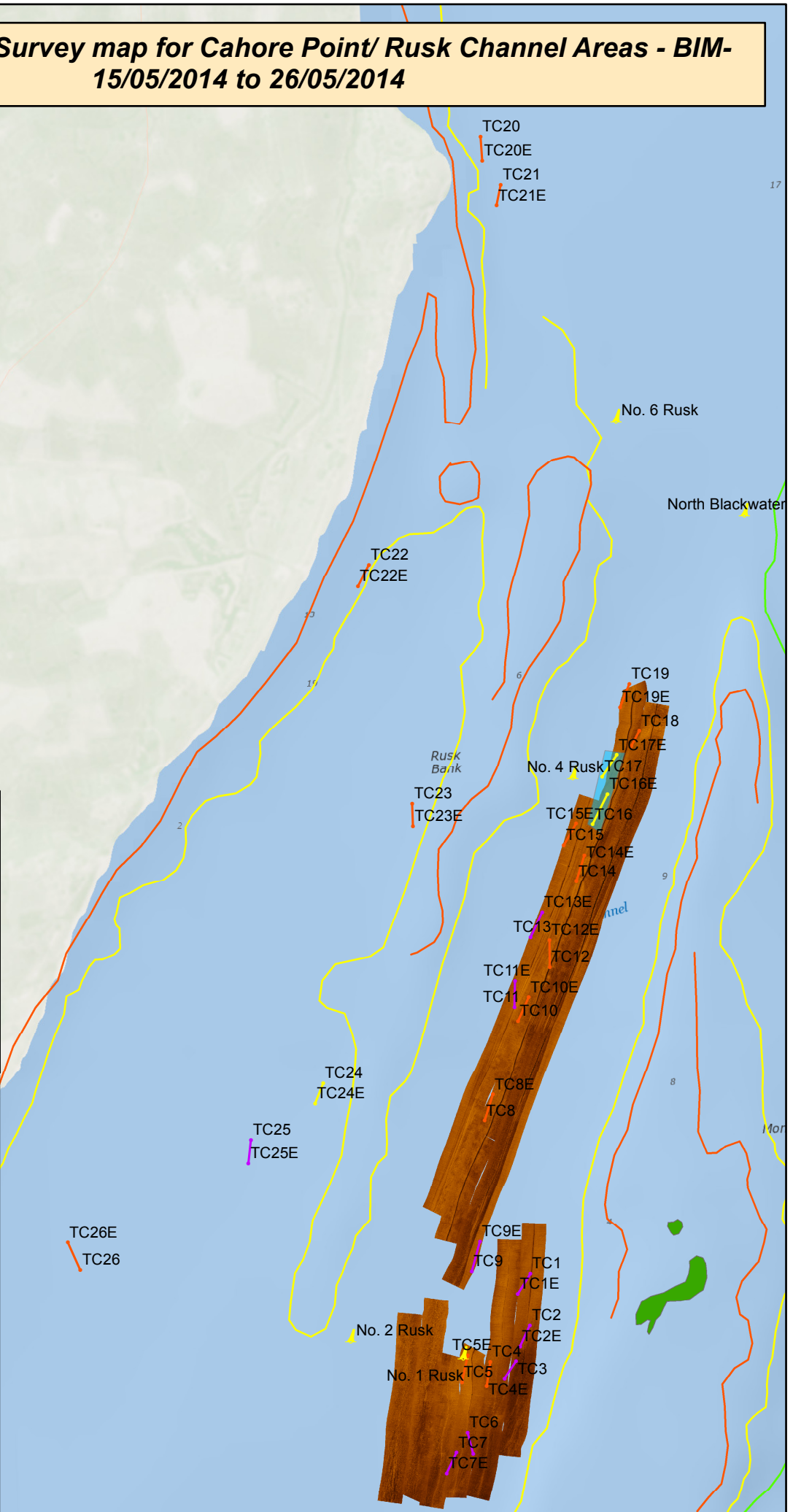
TC stands for Tow Cahore
In the legend Dgd stands for Dredge

**Preliminary Seed Survey map for Cahore Point/ Rusk Channel Areas - BIM-
15/05/2014 to 26/05/2014**

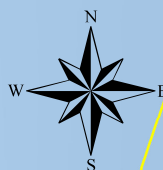


Legend

- signs_dgd
- other_species_dgd
- shells_stones_dgd
- sonar_coverage
- spatfall_area_rusk
- low_tide_mark
- 05_meters
- 10_meters
- 20_meters



Spatfall Area Detail Map for the Rusk Channel - BIM- 15/05/2014 to 26/05/2014



Legend

- signs_dgd
- shells_stones_dgd
- sonar_coverage
- spatfall_area_rusk
- 05_meters
- 10_meters

